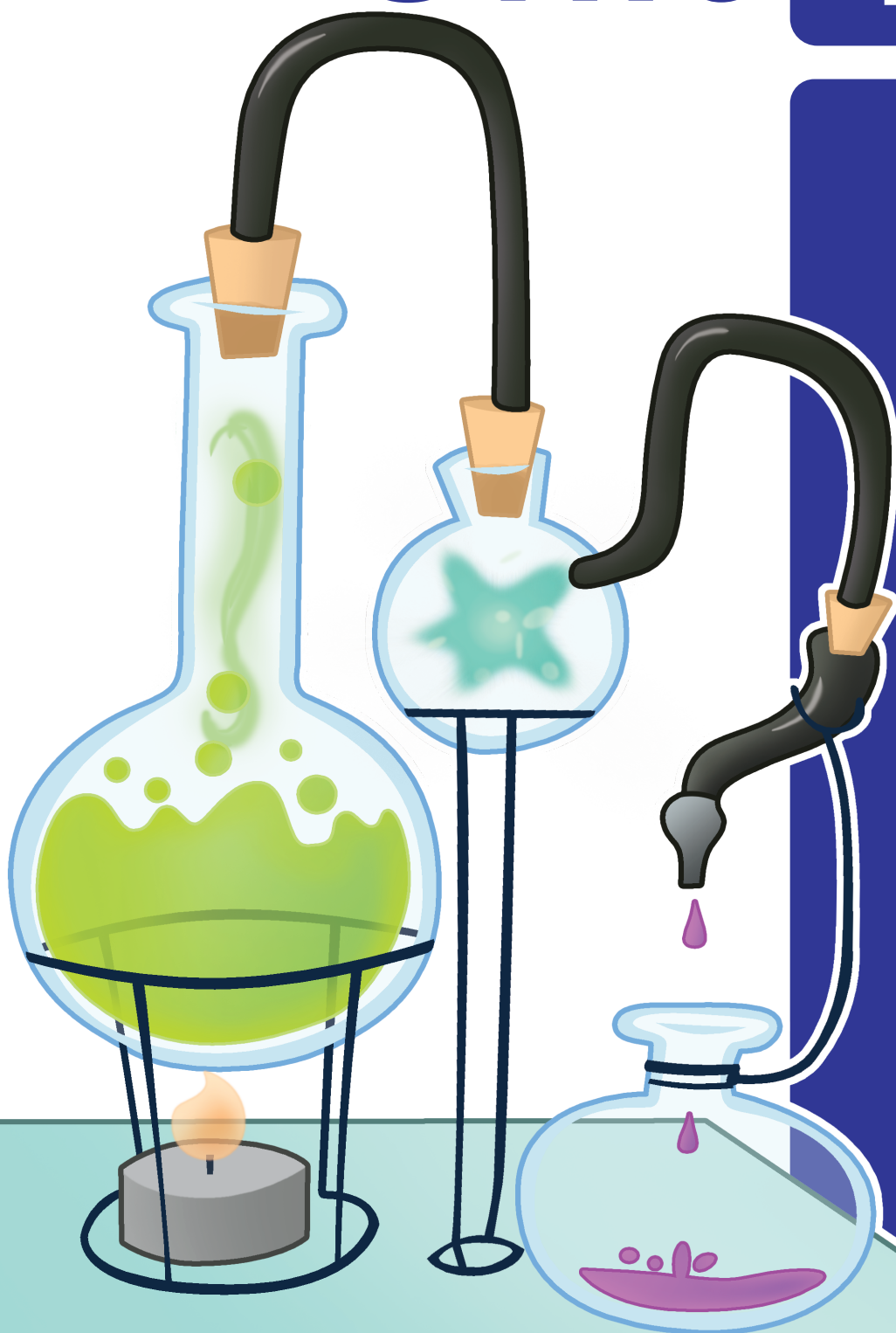


Unit 1





Science

Lesson 3

Name: _____ Date: _____

Directions: Complete the activity.

Characteristics of Living Things

Define *organism*. _____

Define *microorganism*. _____

Define *bacteria*. _____

Compare the characteristics that set a living organism apart from a nonliving thing. Write at least five sentences.

What are the basic needs of a living thing? Write at least three sentences.

Name: _____ Date: _____

Directions: Label the four major parts of the plant.

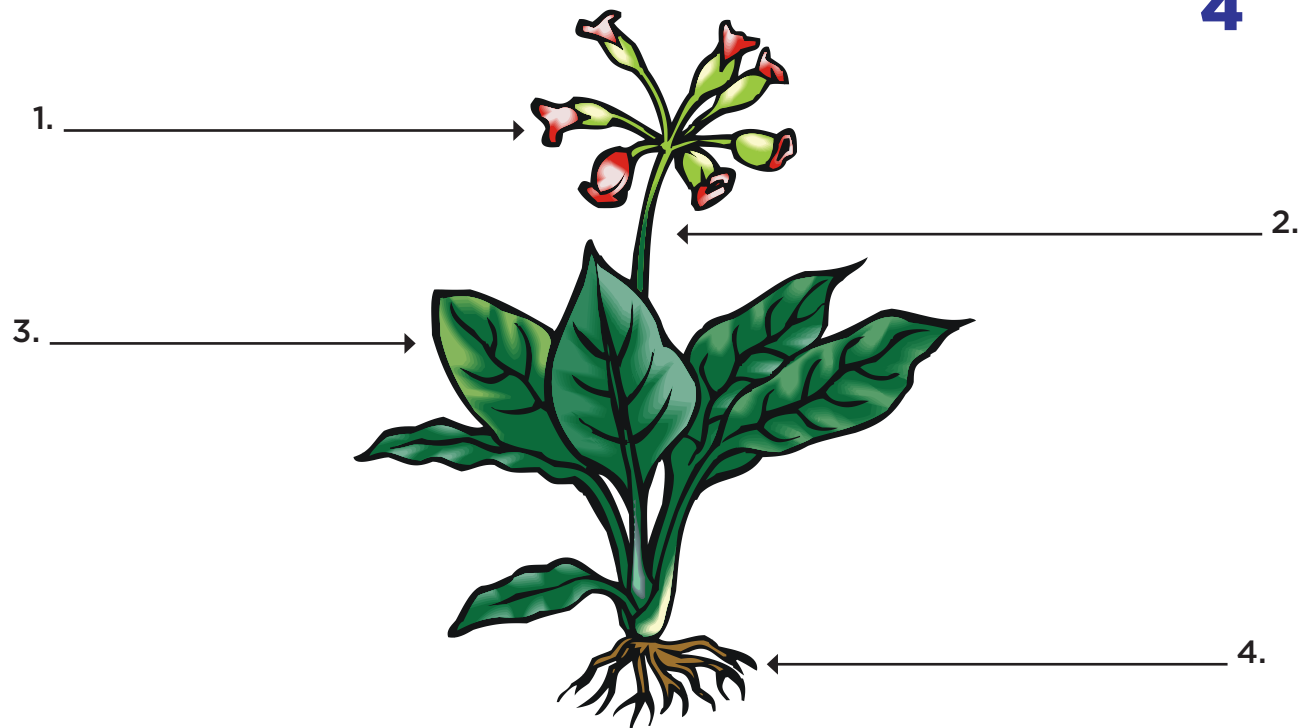


Science Lesson 4

Scan it!



Labeling the Parts of a Plant



Unit 1

Directions: Use the word bank to complete each sentence.

vascular plants xylem phloem stem roots leaves

1. _____ tissues are food tubes that transfer sugar from the leaves to the other parts of the plant.
2. _____ support the plant system and keep it in place; they take water and nutrients from the soil to the rest of the plant.
3. _____ are plants that contain xylem and phloem tissues.
4. _____ tissues are water tubes that transfer water and nutrients from the roots to the leaves.
5. _____ are where the food production of a plant takes place.
6. The _____ holds up the leaves and flower of the plant; it transports water and nutrients from the roots to the rest of the plant.

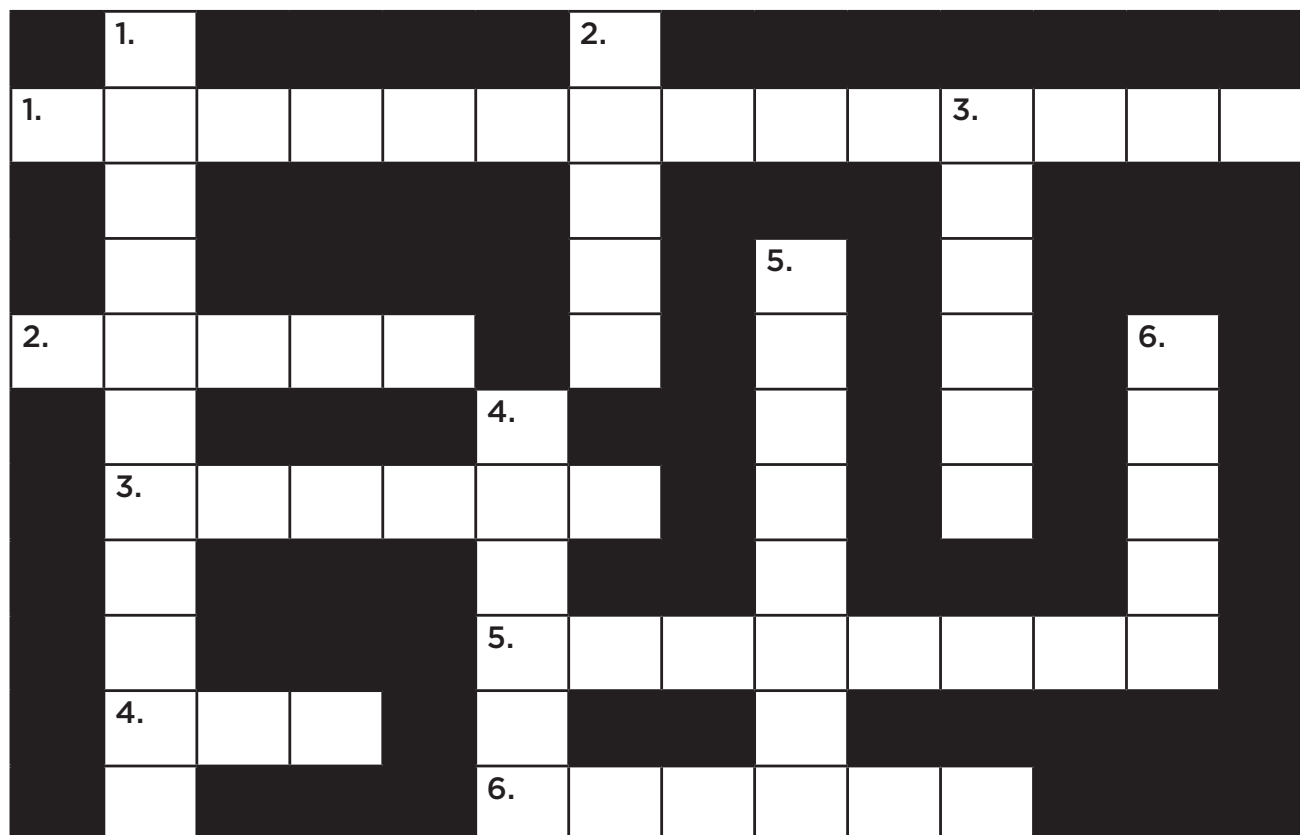
Name: _____ Date: _____

Directions: Complete the crossword puzzle using terms associated with photosynthesis.



Science Lesson 5

Photosynthesis Puzzle



Unit 1

DOWN

1. An organelle within a plant cell that conducts the process of photosynthesis.
2. These tissues are tubes that transfer water and nutrients from the roots to the leaves.
3. All living organisms obtain and use this.
4. Where food production takes place.
5. A plant is a _____, which means that it uses energy to make its own food.
6. The process of photosynthesis is the combination of carbon dioxide plus the sun's energy plus _____.

ACROSS

1. The process that plants use to make sugar for food.
2. The color that chlorophyll reflects.
3. These tissues are tubes that transfer sugar from the leaves to the other parts of the plant.
4. All energy begins with and comes from the _____.
5. These types of plants contain xylem and phloem tissues.
6. Such foods as potatoes and grains are examples of plants that are mostly composed of stored _____.



Science

Lesson 8

Name: _____ Date: _____

Directions: Complete the survey to determine from whom you inherited your traits. Place an X next to each of your traits. Survey your family to recognize who has the same traits as you. Highlight each X that is in the same row as your X. Answer the question at the bottom of the page when you are done with the survey.

My Trait Survey Says...

Unit 1

Attached Earlobes							
Free Earlobes							
Normal Hairline							
Widow's Peak							
No Rolled Tongue							
Rolled Tongue							
No Dimples							
Dimples							
Straight Hair							
Curly Hair							
Hazel Eyes							
Blue Eyes							
Brown Eyes							
	_____	Dad	Mom	Grandma	Grandpa	Grandma	Grandpa

From whom did you inherit your traits? List your traits and the names of the family members who passed them to you.
